

GEARBOX (SYNCHROMESH)

STANDARD TRANSMISSION ONLY

Part No.	Description	Plate No.	No. per Unit	Remarks
DL36833	GEARBOX ASSEMBLY COMPLETE		1	
136101	GEARBOX AND CLUTCH CASING ASSEMBLY	10-1	1	
430463	L.H. Bush , for Clutch Cross Shaft	10-2	1	
1214/16	R.H. Bush , for Clutch Cross Shaft	10-3	1	
266365	Welch Washer , in reverse gear operating rod access hole	10-4	1	
420304	Dowel , locating Flywheel Housing	10-5	1	
34005/12	Stud , for Front End Cover	10-6	4	
34005/14	Stud , for Rear Casing	10-7	7	
430510	Drain Plug , in Casing	10-8	1	
307978	FRONT END COVER	10-9	1	
430514	Gasket , between Front End Cover and Casing	10-10	1	
UFN.131/L	Nut , securing Front End Cover to Casing	10-11	4	
FG.105/X	Washer , Spring, under Nuts	10-12	4	
423200/02	Oil Seal , for Primary Shaft	10-13	1	
430495	End Cover , for Countershaft	10-14	1	
430496	Gasket , between End Cover and Casing	10-15	1	
UCS.131/5R	Screw , Set, securing End Cover	10-16	2	
FG.105/X	Washer , Spring, on Setscrews	10-17	2	
307414	BRACKET, MOUNTING SLAVE CYLINDER	10-18	1	
UCS.131/6R	Screw , Set, securing Bracket to Gearbox		4	
FG.105/X	Washer , Spring, on Setscrews		4	
135915	REAR CASING FOR GEARBOX	10-19	1	
307440	Gasket , between Rear Casing and Gearbox Casing	10-20	1	
UFN.131/L	Nut , securing Rear Casing	10-21	7	
FG.105/X	Washer , Spring, under Nuts	10-22	7	
405011	Thrust Piece , for Speedometer Pinion		1	
431696	Oil Seal , for Mainshaft	10-23	1	
136112	TOP COVER FOR GEARBOX	10-24	1	
307426	Gasket , between Top Cover and Casing	10-25	1	
UFS.131/8R	Screw , Set, securing Top Cover	10-26	4	
UCB.131/22R	Bolt , securing Top Cover	10-27	2	
UCB.131/24R	Bolt , securing Top Cover	10-28	2	
FG.105/X	Washer , Spring, on Setscrews and Bolts	10-29	8	
266365	Welch Washer , in Top Cover	10-30	5	
422503/06	Plug , in Top Cover for Interlock access		1	
425280/07	Sealing Ring , for Selector Rod	10-31	1	
430476	Sealing Ring , for End Cover	10-32	1	
UCS.125/4R	Screw , Set, securing Top Cover to End Cover	10-33	2	
FG.104/X	Washer , Spring, on Setscrews	10-34	2	

GEARBOX (SYNCHROMESH)

STANDARD TRANSMISSION ONLY

Part No.	Description	Plate No.	No. per Unit	Remarks
307897	SELECTOR ROD, 1st/2nd GEARS	10—35	1	
307416	Selector, on 1st/2nd Gear Selector Rod	10—36	1	
430475	Screw, Taper, securing Selector to Rod	10—37	1	
307900	SELECTOR ROD ASSEMBLY, 3rd/4th GEARS	10—38	1	
307898	SELECTOR ROD, REVERSE GEAR	10—39	1	
307417	Selector, on Reverse Selector Rod	10—40	1	
430475	Screw, Taper, securing Selector to Rod	10—41	1	
425292/11	Ball ($\frac{3}{8}$ ") for Selector Rod Interlock	10—42	2	
430479	Plug, for Selector Rod Interlock	10—43	1	
425292/11	Ball, for forward Selector Rod Indent	10—44	2	
432598	Spring, for Indent Balls	10—45	2	
430505	Thimble, for Reverse Selector Rod	10—46	1	
430508	Spring, for Thimble	10—47	1	
430506	Screw, retaining Spring	10—48	3	
430474	Stop Screw, for Selector Rods	10—49	3	
307433	SELECTOR FORK, 1st/2nd GEARS	10—50	1	
307434	SELECTOR FORK, 3rd/4th GEARS	10—51	1	
307435	SELECTOR FORK, REVERSE GEAR	10—52	1	
430475	Screw, Taper, securing Selector Forks	10—53	3	
307427	GEARBOX CHANGE SPEED LEVER	10—54	1	
432043	Knob, on Gear Lever	10—55	1	
433148	Nut, securing Knob to Lever	10—56	1	
430486	Spring, under Gear Lever Cover Plate	10—59	1	
430478	Retaining Plate, for Spring	10—60	1	
307432	Cover Plate, for Gear Lever	10—61	1	
UCS.125/3R	Screw, Set, securing Cover Plate to Top Cover	10—62	1	
FG.104/X	Washer, Spring on Setscrew	10—63	1	
UFB.125/26R	Bolt, retaining Gear Lever in Top Cover	10—64	1	
C.8667/1	Nut, Nyloc, on Bolt	10—65	1	
307428	DIPSTICK ASSEMBLY FOR GEARBOX	10—66	1	
309346	PRIMARY SHAFT	11—67	1	
430503	Bearing Shield, for Primary Shaft	11—68	1	

GEARBOX (SYNCHROMESH) STANDARD TRANSMISSION ONLY

Part No.	Description	Plate No.	No. per Unit	Remarks
431693	BEARING FOR PRIMARY SHAFT (MS.12/KR.V3)	11—69	1	
431694	Snap Ring, on Bearing	11—70	1	
430487	Washer, behind Bearing	11—71	1	
422515/14	Circlip, retaining Bearing	11—72	1	
431249	BEARING, PILOT, FOR MAINSHAFT (B.1412)	11—73	1	
C.22299	MAINSHAFT	11—74	1	
430497	Washer, at front of Mainshaft Bearing	11—75	1	
431693	BEARING, FRONT, FOR MAINSHAFT (MS.12/KR.V3)	11—76	1	
431694	Snap Ring, on Bearing	11—77	1	
430487	Washer, at rear of Mainshaft Bearing	11—78	1	
422515/14	Circlip, retaining Bearing	11—79	1	
430509	Washer, locating Mainshaft Rear Bearing	11—80	1	
42315/06	BEARING, REAR, FOR MAINSHAFT (LS.11)	11—81	1	
299732	FLANGE, COUPLING MAINSHAFT TO PROPELLER SHAFT UNIVERSAL JOINT	11—82	1	
426572	Washer, under Flange Nut	11—83	1	
UFN.362/L	Nut, Slotted, securing Flange to Mainshaft	11—84	1	
L.104/8U	Split Pin, retaining Nut		1	
308143	SYNCHRONISING SLEEVE, 3rd/4th GEARS	11—85	1	
425292/07	Ball, for 3rd/4th synchronising	11—86	3	
430504	Spring, tensioning Ball	11—87	3	
430499	Shim, for Spring	11—88	As req'd	
308144	Outer Synchronising Sleeve	11—89	1	
309186	Synchronising Cup, for 3rd/4th Gears	11—90	2	
309185	3rd SPEED GEAR ON MAINSHAFT	11—91	1	
307431	Bush, in 3rd Speed Gear	11—92	1	
430500	Washer, locating 3rd Speed Gear	11—93	1	
431435	Spring Ring, retaining Gear on Mainshaft	11—94	1	

GEARBOX (SYNCHROMESH)

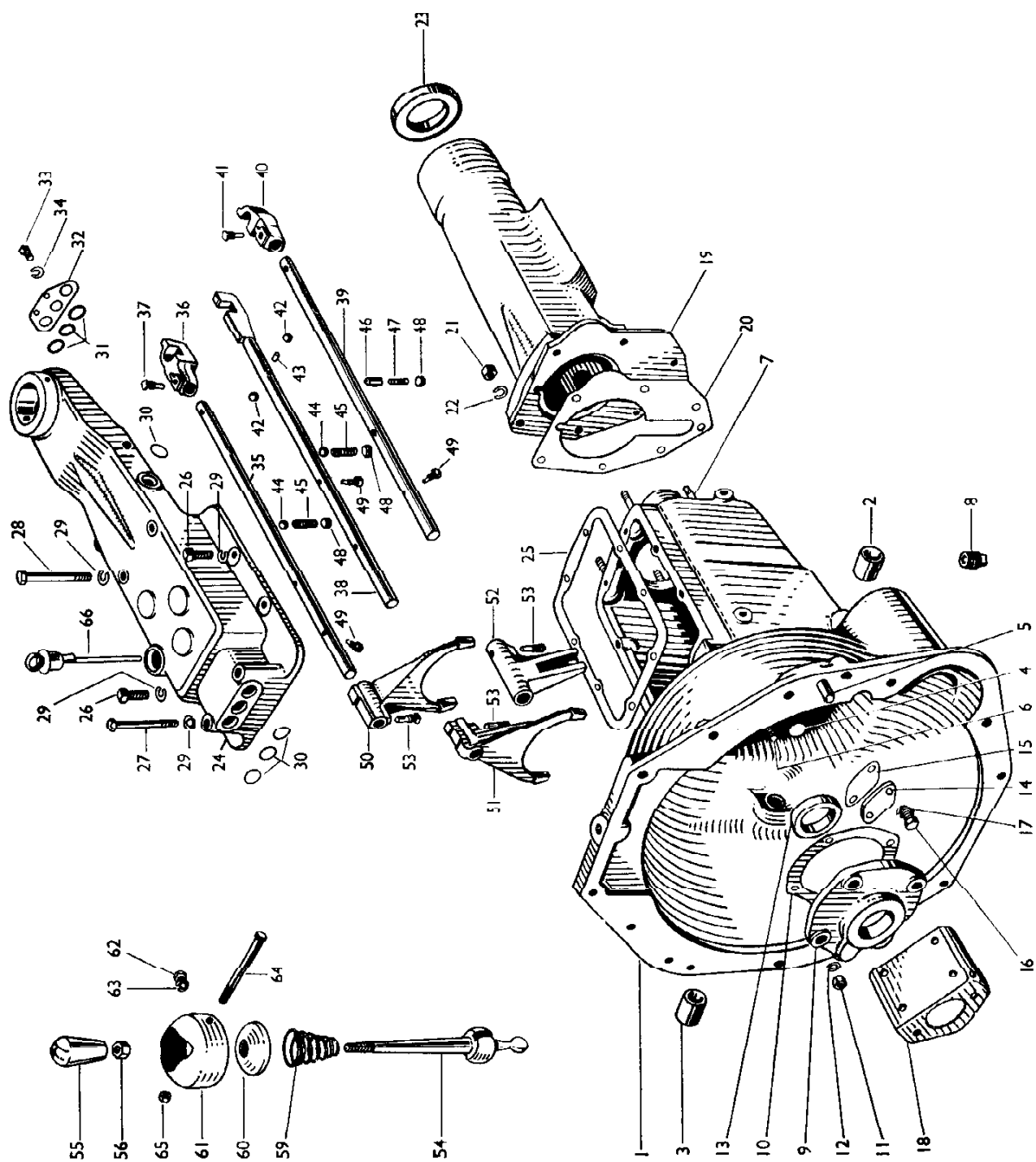
STANDARD TRANSMISSION ONLY

Part No.	Description	Plate No.	No. per Unit	Remarks
309184	2nd SPEED GEAR, ON MAINSHAFT	11—95	1	
307429	Bush, in 2nd Speed Gear	11—96	1	
C.22298	Washer, locating 2nd Speed Gear	11—97	1	
309186	Synchronising Cup, for 2nd Speed Gear	11—98	1	
308139	1st SPEED GEAR SLEEVE	11—99	1	
430498	Plunger, for 1st Gear Interlock	11—100	1	
425292/07	Ball, for 1st Gear Interlock	11—101	1	
425292/07	Ball, for 2nd Gear Synchro	11—102	3	
430504	Spring, for 2nd Gear Synchro Ball	11—103	3	
430499	Shim, for 2nd Gear Synchro Ball Spring	11—104	As req'd	
308140	1st SPEED GEAR, ON MAINSHAFT	11—105	1	
308145	COUNTERSHAFT	11—106	1	
430472	Retainer, for Needle Roller on Countershaft	11—107	4	
431695	Needle Roller, on Countershaft	11—108	48	
430488	Thrust Washer, (.062" thick) at front of Countershaft	11—109	1	} ALTERNATIVES
430489	Thrust Washer, (.067" thick) at front of Countershaft	11—109	1	
430490	Thrust Washer, (.072" thick) at front of Countershaft	11—109	1	
430491	Thrust Washer, (.077" thick) at front of Countershaft	11—109	1	
430492	Thrust Washer, (.082" thick) at front of Countershaft	11—109	1	
430493	Thrust Washer, at rear of Countershaft	11—110	1	
308149	CONSTANT MESH GEAR, ON COUNTERSHAFT	11—111	1	
430464	Distance Washer, between 3rd and Constant Mesh Gears	11—112	1	
308148	3rd SPEED GEAR, ON COUNTERSHAFT	11—113	1	
308147	2nd SPEED GEAR, ON COUNTERSHAFT	11—114	1	
308146	1st SPEED GEAR, ON COUNTERSHAFT	11—115	1	
307422	REVERSE GEAR SPINDLE	11—116	1	
430494	Screw, locating Reverse Spindle and Countershaft	11—117	1	
FG.105/X	Washer, Spring, on Screw	11—118	1	
432135	REVERSE GEAR ASSEMBLY	11—119	1	
432592	Bush, in Reverse Gear	11—120	2	

GEARBOX (SYNCHROMESH)

STANDARD TRANSMISSION ONLY

Part No.	Description	Plate No.	No. per Unit	Remarks
307422	REVERSE GEAR FORK	11—121	1	
307437	Shaft, for Reverse Gear Fork	11—122	1	
430511	Bush, in Fork, for Shaft	11—123	1	
430512	Screw, in Shaft	11—124	1	
430513	Locknut, on Screw	11—125	1	
308018	SPEEDOMETER DRIVE PINION (14 TEETH)	11—126	1	
431412	Thrust Washer, for Speedometer Pinion	11—127	1	
431411	SPEEDOMETER PINION HOUSING ASSEMBLY		1	
431409	Housing, complete with Bush	11—128	1	
431697	Oil Seal, between Housing and Adaptor (025—062)	11—129	1	
431410	Adaptor, for Pinion Housing	11—130	1	
422524/01	Millis Pin, securing Adaptor		1	
431698	'O' Ring, in Pinion Housing	11—131	1	
430519	Pin, locating Pinion Housing	11—132	1	
FG.105/X	Washer, Spring, on Pin	11—133	1	
UCB.131/11R	Bolt, securing Gearbox Assembly to Cylinder Block		7	
UFB.131/10R	Bolt, securing Gearbox to Support Plate		4	
UFN.131/L	Nut, on Bolts		4	
FG.105/X	Washer, Spring, on Bolts and under Nuts		11	
136200	BRACKET, SUPPORTING GEARBOX		1	
307497	RUBBER MOUNTING, FOR GEARBOX		2	
C.8667/2	Nut, securing Rubber Mounting to Support Bracket		2	
UCS.131/5R	Screw, Set, securing Rubber Mounting to Gearbox Mounting Bracket		4	
C.8667/2	Nut, on Setscrews		4	



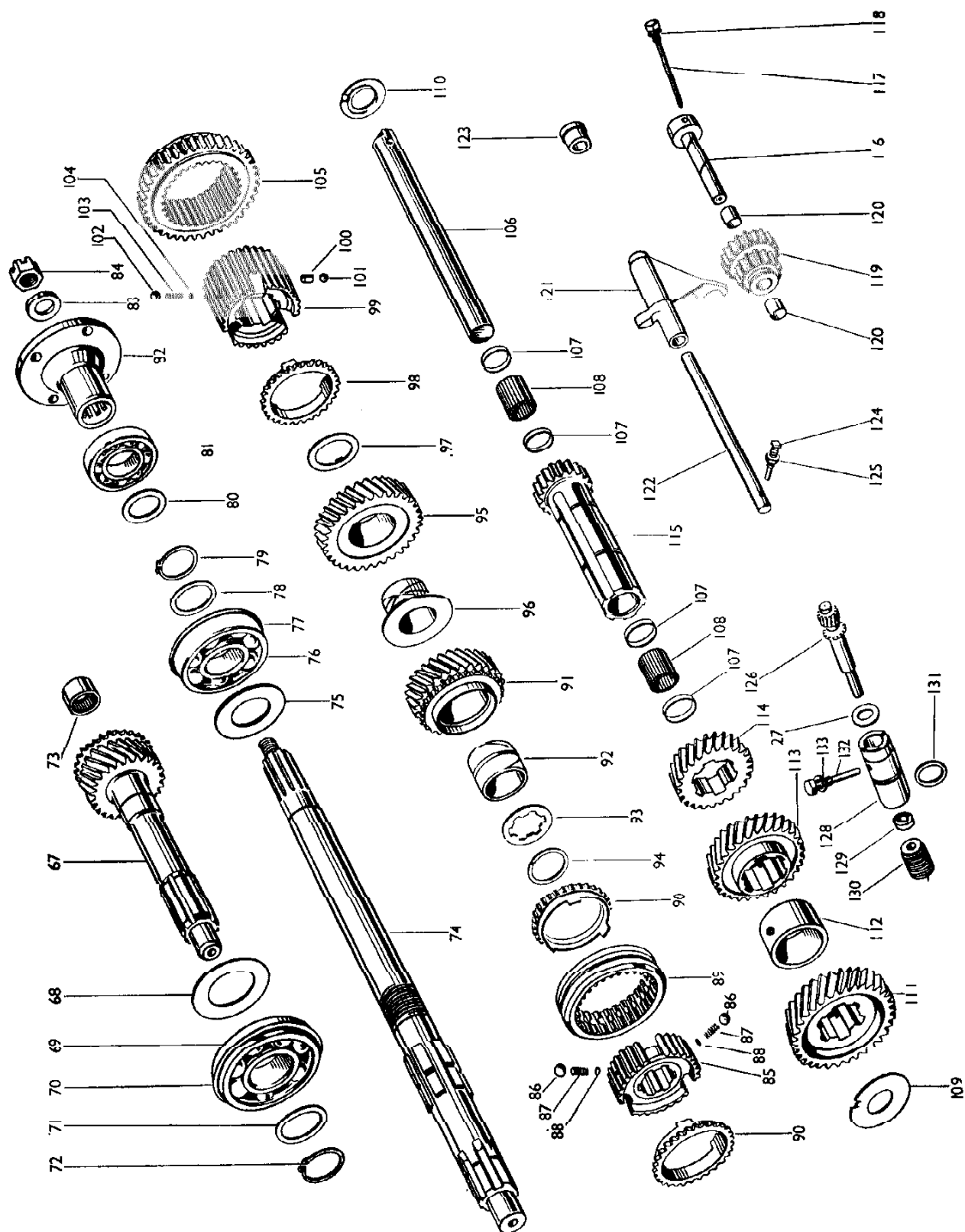


PLATE II